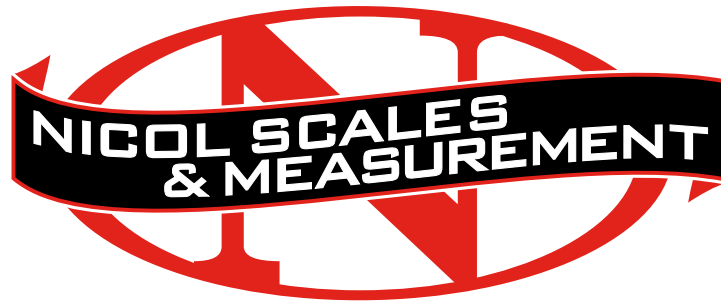


PRESENTED BY



**AN ISO 17025
ACCREDITED COMPANY**

DALLAS

FT WORTH

AUSTIN

HOUSTON

NICOLSCALES.COM

800.225.8181

[CONTACT US](#)

NICOL SCALES & MEASUREMENT IS AN ISO ACCREDITED CALIBRATION
COMPANY THAT HAS PROVIDED CALIBRATION, REPAIR AND SALES OF ALL TYPES
OF WEIGHING AND MEASUREMENT PRODUCTS SINCE 1931.



COUNTING GUIDE



Resolutions and APWs

Choosing the Right Counting Scale

Saving Money with Better Samples

Where Counting Scales are Used

Ingenuously Practical

OHAUS GUIDE TO COUNTING SCALES

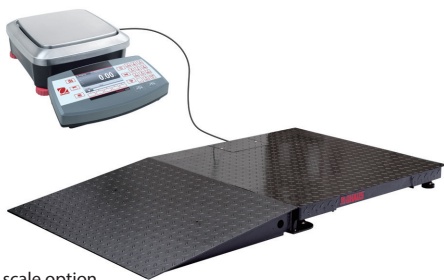
Counting Scales

There are many ways to count, but only Counting Scales offer the best combination of accuracy, ease of setup, and cost.

All Counting Scales use the weight of a sample of parts to create an **Average Piece Weight (APW)**—the scale shows the count of the pieces on the pan by dividing the weight by the APW in memory.

The main driver for precision in a counting scale is the weighing technology used—often called a **loadcell**—with more precise scales using better quality loadcells to ensure accuracy. While any scale can claim to be incredibly precise, OHAUS scales provide accurate counts through quality components, stable software, and high precision loadcells.

Higher-level scales will offer features like **APW Enhancement**, Low APW Alerts, and Libraries to allow quick switching between many items, even keypads to allow entry of box (tare) weights and a preset APW.



Shown with 2nd scale option

Choose the Right Counting Scale

- **What is the weight of the lightest part?**
It should equal the minimum APW of the scale
- **How much do the boxes weigh (parts plus box)?**
The capacity of the scale should be 1.5 to $\times 2$ the heaviest box
- **How big is the largest box you will be using?**
Scales can range from 6" \times 6" all the way up to 5' \times 5'
- **Where will the scale be used—on a bench or floor?**
Higher capacity bases usually are on the floor
- **How rough is the environment?**
Look for metal housings and thick stainless steel pans
- **Do you need battery power?**
Battery powered scales are great for portable use
- **Do you need to count on more than one platform?**
If you do, look for Remote Base or 2nd Scale connections
- **Do you need to store information on multiple parts?**
Get more memories than the number of parts you have
- **Do you need a barcode reader and/or label printer?**
Barcode systems increase speed and accuracy of counts

Ingeniously Practical

OHAUS GUIDE TO COUNTING SCALES

Resolutions and APWs

Counting scales have a displayed resolution and an internal (or counting) resolution. The **Displayed Resolution** is the smallest weight it can show on the display—the readability of the scale. So if a scale has a 60lb capacity by 0.002 readability, the displayed resolution is 1:30,000 or 30,000d. **Internal Counting Resolution** is several times higher than the Displayed Resolution, and is the scale's ability to count using a sample. OHAUS products support Internal Counting Resolutions up to 7,000,000d.

While these specs help you choose between scales, they will not tell you which scale will work best for you. The real spec you need is the **Minimum APW**, or the smallest piece weight that the scale will support, which must be at least half of the weight of your smallest part. The Minimum APW will be higher for a certain capacity in a more precise scale.



The Need for Balance—While most people see balances in the lab, not the manufacturing line, balances' higher precision can help you get ultra-precise APWs. All OHAUS balances have a counting mode, where the user selects a sample size and then uses the balance to determine the APW.

Better Sampling Saves Money

- Sample and count the same part—do not mix parts
- Make sure your sample comes from different times in your production cycle
- Make sure your part does not change due to moisture
- Dirt and oil will affect the accuracy of part counts
- Check your APW periodically—once a shift, once a day—to ensure that your part weight has not changed.
- Use Auto Optimization to ensure that the sample of parts is large enough to average out any differences in weights—100 pieces in a sample is a good rule of thumb
- Use the most precise scale to ensure your counts are accurate

Call your OHAUS Representative
1.800.672.7722

COUNT ON OHAUS



COUNTING SCALES

Count the number of parts in a container based on an average piece weight. Can connect to a second platform for bulk counting.



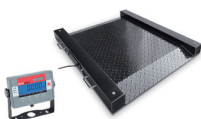
BENCH SCALES

Weigh and count parts and boxes on scales designed for industrial use



CHECKWEIGHERS

Clearly alert operators to over/under filled packages



FLOOR SCALES

Handle boxes, bins, and totes up to 10,000lb



BALANCES

Provide highest precision for determining APWs. Many are also portable, for inventory spot checks.

Where Can You Use Counting Scales?

- Fastener and metal parts manufacturing
 - Plastic parts injection molding lines
 - Parts bins, in-process inventory locations
 - Warehouses and distribution hubs
 - Production lines, assembly areas
 - Wholesale and retail locations
 - Foodservice and catering halls
 - Hardware stores, plumbing supply houses,
- ... any place you count, you need a counting scale!**

OHAUS CORPORATION
7 Campus Drive
Suite 310
Parsippany, NJ 07054 USA

Tel: 800.672.7722
973.377.9000
Fax: 973.944.7177
www.ohaus.com

ISO 9001:2015
Registered Quality
Management System

Call your OHAUS Representative
1.800.672.7722